



INJECTION INTELLIGENCE





EXPERTS SINCE 1970.
Best practice for the future.

MAPLAN is a leading producer of elastomer injection moulding machines and an expert in 360-degree system solutions for the semi- and fully- automated production of rubber and silicone products. MAPLAN has stood for expertise and reliability since 1970. Using the latest industry technology, we constantly drive product development and optimise our production methods. In this way, we ensure that we stay ahead of the pack when it comes to the newest technology.

**Advancement through
innovation & sustainability**

Our customers benefit both from MAPLAN's technological prowess, as well as our individualised approach to customer service. MAPLAN develops and manufactures technology to produce elastomer moulded parts - from simple rubber moulded parts to high-quality precision parts. We build high-end systems for companies that operate in a challenging, ever changing sector. Together with our customers and partners, we develop tailor-made product solutions. As such, we are responsible for that crucial competitive advantage which sets our customers apart in a future-oriented market.

Success through **innovative** methods

MAPLAN guarantees efficient processes, because we know that time is money. We believe that innovation in injection moulding technology means pursuing all possible avenues in order to optimise production processes that are in-line with the latest technological standards. This goes for our in-house production methods as well as for the production processes of our customers.

Focusing on what is important

This is just one of the reasons why innovative Lean Line Production has been introduced at the MAPLAN Headquarters. Lean Production always goes hand in hand with increased efficiency and waste reduction - whether internally or on the part of suppliers and customers. Optimised machine quality can only be guaranteed by optimum manufacturing conditions. Our systems are the proverbial proof in the pudding of this way of thinking.

Our production



Together, we are MAPLAN

The extra mile – Individualised customer service adds value

Individualised customer experience is the key to success. In an era of unending digitalisation, we value personal relationships and empathy.

What do you really need? We focus on the value. This is precisely why we look to foster long-term partnerships: we know how you operate; we know all about your problem areas and how to solve them.

A good relationship starts with a good conversation. Listening, asking the right questions - putting oneself in the other's shoes. This is how we foster a sense of trust.

Together towards success

Diversity makes teams more successful. We know this and encourage diverse teams of experienced, long-term specialists and more junior staff members. Optimal working conditions and an open dialogue increase motivation and create drive. We see the future as being full of opportunity and are open to the ideas and needs of our employees - this is not a one-way street.

*Our employee relationships are built on trust -
just like our business relationships.*



Moving forward **environmentally compatible**

MAPLAN: Green Factory Award

For us, sustainability is an all-encompassing issue. It cannot simply be reduced to its individual components. For this reason, we at MAPLAN take economic, ecological and social aspects when creating an effective collaboration. Sustainability also has the added benefit of increasing efficiency. At MAPLAN, our entire process chain is continually enhanced for optimum efficiency - from the supplier through production to the customer. Using resources efficiently and sustainably is part of our corporate culture.

For us, this is not just an empty promise, but a corporate responsibility which we live and breathe to the benefit of all.

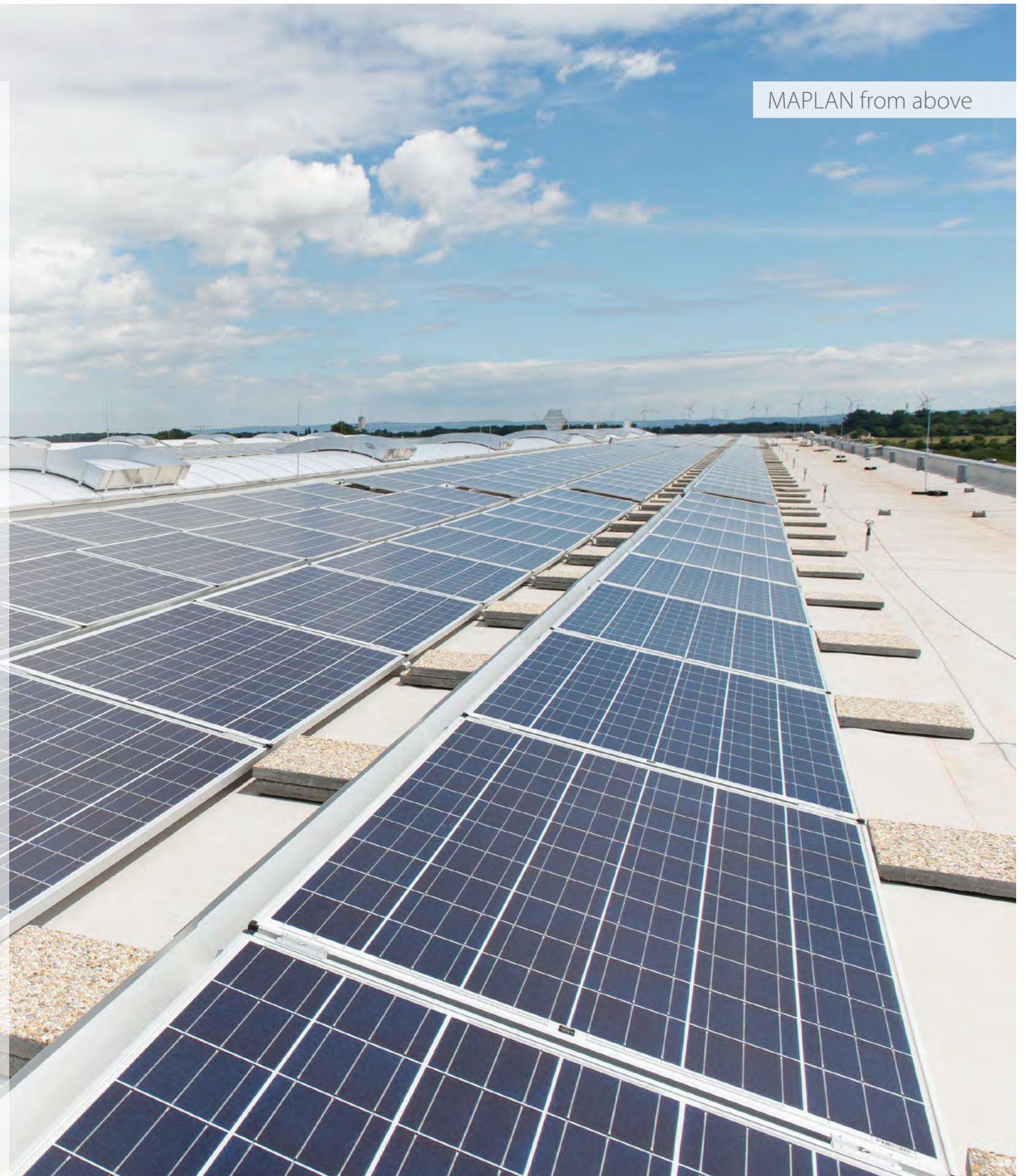
But when it comes to our customers, all these business philosophies mean one thing above all else: Our customers can be sure that our convictions don't end with the production of our machine but are followed through until the finished part is produced.

Your benefit: Efficient production with MAPLAN

These products & services help our customers to produce their products in a resource-efficient manner:

- ① Energy-saving drive: Up to 50 percent energy savings with the MAPcooldrive
- ① Intelligent temperature control: Up to 80 percent less energy consumption with MAPdci temperature control units
- ① Energy monitoring: Keep an eye on consumption with the MAPenergywatcher
- ① Minimal material loss when changing compounds with the original: MAPfiffo injection unit

MAPLAN from above



**INGENIOUS CONTROL UNIT - WYSIWYG | OPTIMAL
PROCESS ENGINEERING | HIGHEST ENERGY EFFICIENCY
ATTRACTIVE DESIGN | FAST & FLEXIBLE | DURABLE**

System solutions with a **PLUS+**

MAPLAN - More than ever

What if it were possible to operate elastomer injection moulding machines in the same way as they do now, but with less power and resource consumption? This is no longer a dream but is now a reality: MAPLAN machines increase productivity and reduce energy consumption with proven success. In addition, our technology helps make your employees' workload easier and more efficient to produce the best products for your business. We offer several MAPLAN* benefits in comparison to conventional injection moulding technology.

More productive with efficient processes?

MAPLAN's modern technology is used in order to make production processes as cost-effective as possible. Our technology makes it possible to create versatile ways in which to optimise the production process according to the individual requirements of our customers:

- ⊗ Minimal pressure loss with the MAPfiffo injection unit
- ⊗ More flexible and productive with MAPLAN automation solutions
- ⊗ Process optimisation with the MAPcommander C6 controller

Economical with innovative solutions

- ⊗ Higher process speed and increased traverse speeds
- ⊗ Modular design guarantees solutions for all requirements and budgets
- ⊗ Long life-time through proven and tested technologies and high quality components
- ⊗ Most compact footprint on the market: up to 50 percent less space required on the production floor
- ⊗ Attractive cost-effective standard models

We do the **hard work** for you

- ⊗ Maintenance-friendly design: Sophisticated door systems allow easy accessibility
- ⊗ Many models - ONE control unit: MAPcommander C6 with comprehensive standard functions for control and documentation across all MAPLAN machines

In-time with optimal processes

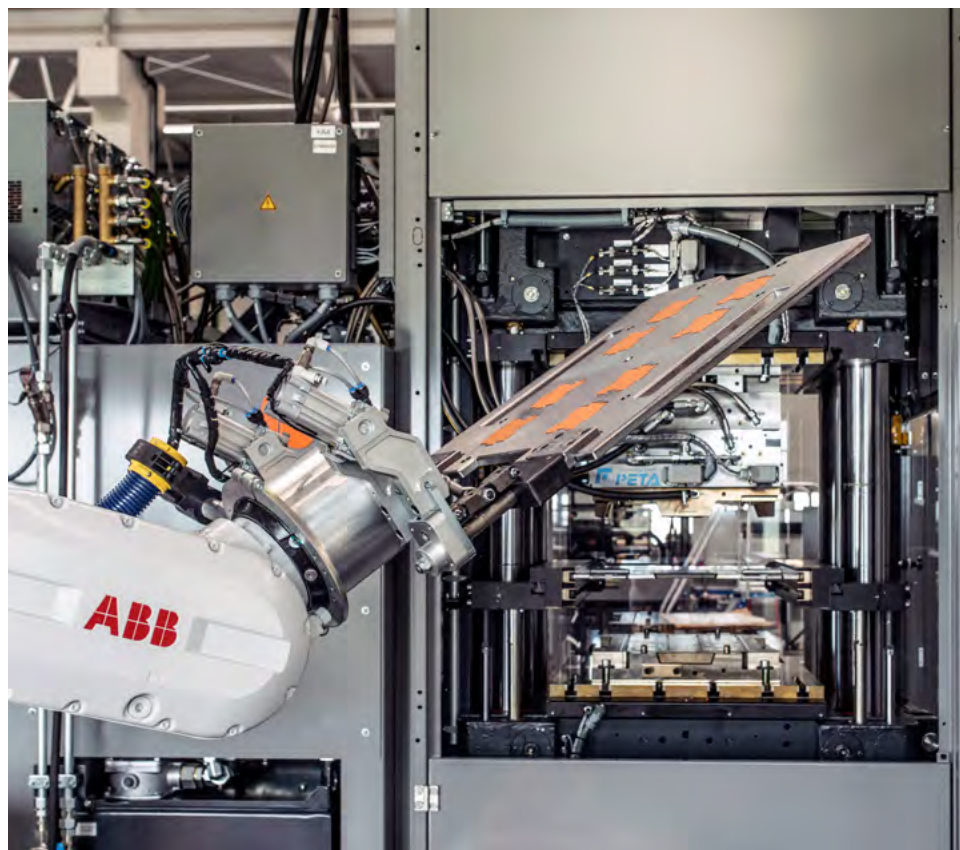
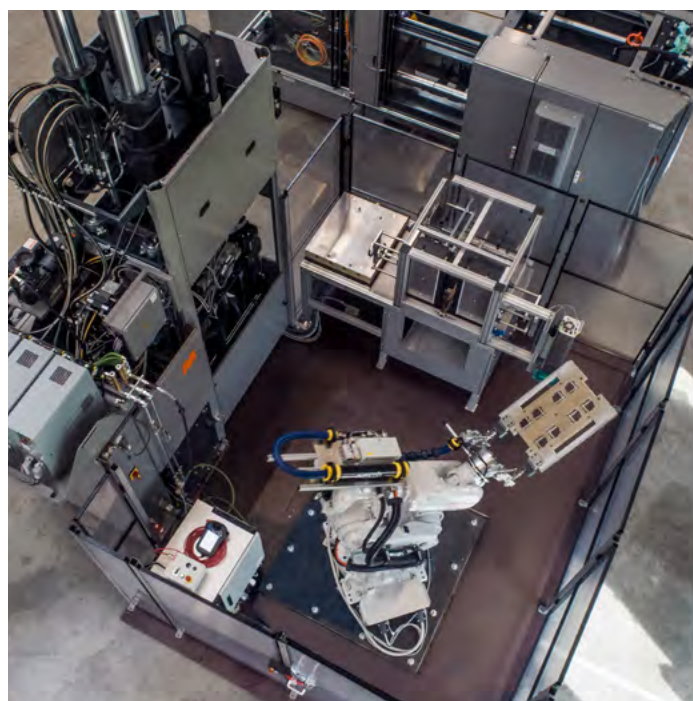
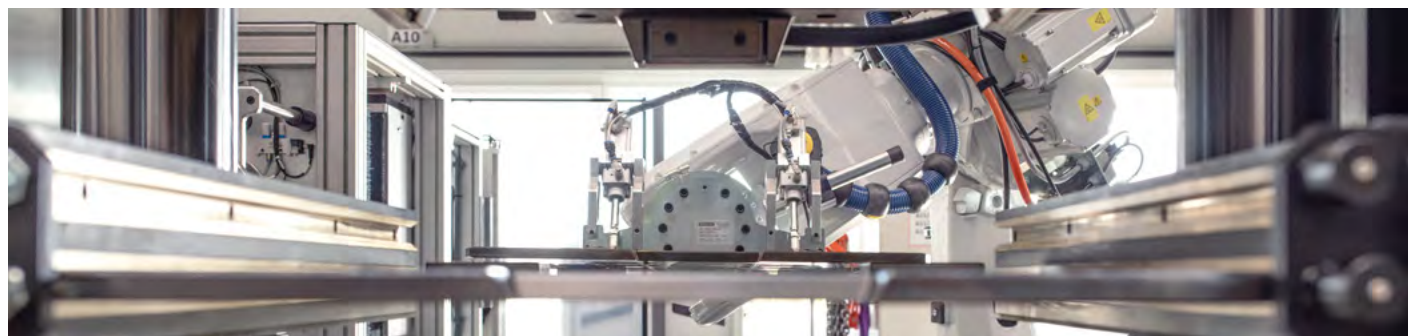
- ⊗ In-time Production with high process accuracy:
 - high component quality, fast production and minimum rejects or waste
- ⊗ Easy-to-use technology for experts:
 - MAPfiffo injection unit for large processing window, best possible repeat accuracy, outstanding repeatability, optimum shear heating and therefore minimum cure time
- ⊗ Minimise process fluctuations: MAPcommander C6 visualises processes and makes monitoring easy

Energy-efficient & resource-conserving production

- ⊗ MAP.cooldrive servo-drive: up to 50 percent less power consumption and no oil cooling required
- ⊗ MAPfiffo injection unit: Significantly less material wastage during cleaning or compound changes
- ⊗ The quietest machine on the market: Silent operation with MAP.cooldrive
- ⊗ MAP.dci: Intelligent, consumption-dependent control of the temperature control units

Clever solutions for smart manufacturers

- ⊗ Higher productivity with the access to 'Industry 4.0' and digitisation
- ⊗ Control of robotics, automation solutions and external peripheral devices with one controller: MAPcommander C6
- ⊗ Data export for MES and BDE systems: with Euromap77 interface and OPCuA data protocol



System Intelligence

360° Turnkey solutions tailor-made in house in collaboration with our customer

Based on your specifications, MAPLAN creates a perfectly coordinated interplay of injection moulding machines, options and automation components. In doing so, we rely on our expansive automation portfolio, which includes everything from simple plate handling systems to linear or multi-axis robots.

High-quality system components are combined to form an effective production cell. The tailor-made MAP.autocell thus takes over the entire production process of your products - ranging from component feed-in to production to further processing. All components are operated centrally via the MAP.commander C6 machine control system.

You benefit from a single point of contact. The MAPLAN team ensures a professional and smooth collaboration.



Moulds



Robotic solutions



Cold runners

High **quality** production

MAPLAN injection moulding machines are used across the world in the following industries:

AUTOMOTIVE | **ALTERNATIVE ENERGIES** | RAILWAY TECHNOLOGY | **SANITARY SYSTEMS** | MEDICAL TECHNOLOGY
CONSTRUCTION, GARDEN & ELECTRICAL | FURNITURE & OFFICE SUPPLIES | **HOUSEHOLD & APPLIANCES**
OIL PRODUCTION | **AEROSPACE** | SAFETY TECHNOLOGY
and many more!

The following process technologies are the standard:

IM	Injection Moulding
ITM	Injection Transfer Moulding
2K-IM	Dual Compound Injection Moulding
IC / OMI	Injection Compression / Open Mould Injection
CM / TM	Compression Moulding / Transfer Moulding



Horizontal, Vertical or C-Frame?

In any case a MAPLAN machine

Certain designs are best for specific applications and manufacturing processes. With over 40 models across all ranges, MAPLAN offers a versatile portfolio with something for everyone. With several clamping systems and optional features, we can supply the ideal production system that suits your needs perfectly.

Horizontal

- Efficient:** With various demoulding devices such as brush systems
- Productive:** Perfect for producing precise small parts in large quantities
- Versatile:** Large clearance width and closing stroke for a wide variety of mould designs
- Specialised:** For large series in fully automatic production with minimum personnel requirement.

Vertical

- Modular:** Wide range with a variety of clamping and injection units available
- Productive:** Can be enhanced with the addition of robotics, automation solutions, peripheral devices
- Versatile:** Injection from the top, bottom or 2k (dual compound)
- Specialised:** Ideal for products with inserts, e.g. rubber-metal articles

C-Frame

- Ergonomic:** Good working height and ideal accessibility from 3 sides
- Versatile:** Injection possible from top or bottom
- Specialised:** Ideal for producing corner connections and smaller batches

Presses

- Simple:** No injection unit
- Specialised:** Ideal to produce products which cannot be produced by injection moulding and small series of large-volume and/or large-area products



Horizontal

Efficient for new standards of economy

Powerful and fast - the horizontal **RAPID⁺** injection moulding machines from MAPLAN are designed for high speeds and automated processes. They support all common demoulding and automation concepts for fully automatic production, thereby significantly reducing personnel costs. A true all-rounder with a proven track record.

Highlights

- ① Generously dimensioned clamping unit with extremely high stiffness and parallelism
- ① Large daylight and closing stroke for a wide range of mould designs
- ① Optimised for the processing of difficult technical elastomers
- ① Various demoulding devices and brush systems available
- ① Post-processing-free production of sealing elements and moulded articles possible
- ① Cold runner ready
- ① Comes with all MAPLAN⁺ benefits

Models:

TYPES	CLAMPING FORCE [kN]	INJECTION VOLUME [cm ³]	HEATING PLATE DIMENSION [Standard mm]
RAPID ⁺ 200	2000	200 – 1000	510 x 510
RAPID ⁺ 300	3000	200 – 2600	670 x 670
RAPID ⁺ 400 / 460	4000 / 4600	700 – 4000	875 x 875
RAPID ⁺ 650	6500	4000 – 8500	1000 x 1100
RAPID ⁺ 800	8000	4000 – 8500	1000 x 1100



Vertical

Ergonomics across the board

Precise & Versatile - the vertical MAPLAN **ERGO⁺** injection moulding machines are designed to suit a variety of requirements and impress with their high quality and optimised repeatability. The entire **ERGO⁺** series comes equipped with the energy-saving servo-hydraulic MAP.cooldrive and the high-precision MAP.fifo injection unit.

Highlights

- ① Ergonomic operating height
- ① Compact machine design cast in one pour
- ① High flexibility for efficient automation and tailor-made customer solutions
- ① Cold runner ready
- ① Comes with all MAPLAN⁺ benefits
- ① Maintenance-free platen parallelism for a life time

Models:

TYPES	CLAMPING FORCE [kN]	INJECTION VOLUME [cm ³]	HEATING PLATE DIMENSION	
			[Standard mm]	[Maximum mm]
ERGO ⁺ 90	900	200 – 1000	300 x 400	380 x 450
ERGO ⁺ 160 / 180	1600 / 1800	200 – 2600	450 x 510	535 x 560
ERGO ⁺ 250 / 280	2500 / 2800	200 – 4000	560 x 650	670 x 650
ERGO ⁺ 250XL / 280XL	2500 / 2800	200 – 4000	560 x 780	670 x 780
ERGO ⁺ 320	3205	200 – 4000	670 x 780	760 x 850
ERGO ⁺ 400 / 460	4000 / 4600	1500 – 8500	710 x 800	820 x 810

Automatic strip tear control and optimised strip feed for a hassle-free production process

Exceptionally short cycle times with the help of the MAP.cooldrive unit

MAP.logicmoves: freely programmable additional movements, which can be electric, hydraulic or pneumatic

MAP.smartlight for visualising the state of the machine - ideal for multi-machine operation

Optimal accessibility due to additional space below the machine



ERGOMAX⁺

Vertical

The new size

We are pushing boundaries when it comes to size, precision and processing quality with the help of our new vertical **ERGOMAX⁺** series, whether in the fully or semi-automatic production of elastomer articles. The entire **ERGOMAX⁺** series comes equipped with our energy-saving servo-hydraulic MAP.cooldrive as well as our high-precision MAPfiffo injection unit.

Highlights

- ① Ergonomic operating height despite larger machine
- ① Flexible adjustment for different tool heights
- ① Optimally adaptable to customer specifications
- ① Can be enhanced with MAPLAN automation and robotics concepts
- ① Cold runner ready
- ① Comes with all MAPLAN⁺ benefits
- ① Maintenance-free platen parallelism for a life time

Models:

TYPES	CLAMPING FORCE [kN]	INJECTION VOLUME [cm³]	HEATING PLATE DIMENSION [Standard mm]
ERGOMAX ⁺ 460 / 490	4600 / 4900	1500 – 8500	710 x 800
ERGOMAX ⁺ 570	5700	3500 – 17500	810 x 1000
ERGOMAX ⁺ 720	7200	6000 – 17500	900 x 1000
ERGOMAX ⁺ 900	9000	10500 – 17500	1100 x 1350



Vertical

Tried and tested at the **highest level**

Come prepared for a variety of applications with the help of the vertical **CLEVER⁺** injection moulding machine in the basic model from 160 to 400 tons. You can also take advantage of numerous MAPLAN⁺ benefits with the **CLEVER⁺** series.

Highlights

- ⌚ Most compact footprint in its category on the market
- ⌚ Particularly cost-effective
- ⌚ MAP.commander C600 for optimum user-friendliness
- ⌚ With reliable axial piston pump drive
- ⌚ Combines functionality with attractive design

Models:

TYPES	CLAMPING FORCE [kN]	INJECTION VOLUME [cm³]	HEATING PLATE DIMENSION	
			[Standard mm]	[Maximum mm]
CLEVER ⁺ 160	1600	200 – 1000	450 x 510	535 x 560
CLEVER ⁺ 250	2500	1500 – 2600	560 x 650	670 x 650
CLEVER ⁺ 400	4000	3500 – 4000	710 x 800	800 x 810



C- Frame

Providing **maximum accessibility** to the working area

Our tried and tested vertical **EASY⁺** C-frame injection moulding machines are compact, perfectly suited to produce specific rubber articles, including moulded corner joints and small batches, and are available in clamping forces ranging from 20 to 100t.

Different machine concepts can be implemented depending on the intended application:
1.Top – Injection from the top, closing from the bottom **2. Bottom** – Injection from the bottom, closing from the top **3.Top Top** – Injection and closing from the top - with fixed lower plate. The unique design of this machine truly comes into its own when connecting elastomerprofiles or especially automated processes. Optionally available: 85cm³ and 150cm³ injection units for TPE processing.

Highlights

- Intelligent one-piece design with very small footprint
- Ideal accessibility from 3 sides
- Ergonomic working height
- Many options available
- Simple operation with the MAP.commander C600 control unit
- Comes with many MAPLAN⁺ benefits

Models:

TYPES	CLAMPING FORCE [kN]	INJECTION VOLUME [cm ³]	HEATING PLATE DIMENSION [Standard mm]
EASY ⁺ T 30	300	50 – 250	255 x 255
EASY ⁺ T 40	400	50 – 250	255 x 255
EASY ⁺ T 100	1000	50 – 400	500 x 400
EASY ⁺ B 30	300	100 – 200	255 x 255
EASY ⁺ B 40	400	100 – 200	255 x 255
EASY ⁺ TT 20	200	50 – 200	300 x 300
EASY ⁺ TT 30	300	50 – 250	300 x 300



FORCE+

Presses

No injection unit needed

The MAPLAN **FORCE+** is the perfect companion for special press applications. Once again, you can benefit from a range of MAPLAN+ advantages with this series. All MAPLAN models are available in a press version.

- ① Highest level of precision
- ① Particularly cost-effective for a press of Austrian quality
- ① MAPLAN automation solutions available
- ① Retrofitting of a MAP.fifo injection unit possible



BOTTOM+

Vertical

The unique **BOTTOM+** design is suitable for special mould designs that require injection into the mould from below. **BOTTOM+** models are available with various clamping forces and come with all customary MAPLAN+ benefits.

- ① Alternative injection unit systems available depending on size
- ① Well proven screwram injection unit available for larger volumes
- ① Ergonomic accessibility to strip intake

MULTI+

Vertical

Two compounds - one solution

With MAPLAN's dual compound technology, two elastomer compounds can be injected sequentially, simultaneously or with a timed delay. This allows for new techniques in the production of high-tech articles with special geometry or special mechanical properties.

Top MAP.fifo injection unit



2 Top MAP.fifo Injection units



2K Splitline

- ① One injection unit from the top, one injection unit horizontally from the side
- ① Versatile, as it can also be used as a single compound machine
- ① Different configurations of the second injection unit possible

2K Top

- ① 2 injection units from the top
- ① Same footprint as a single compound injection moulding machine
- ① Available with up to three hydraulic drives for faster processes

The **intelligence** of the MAPLAN machine

MAP.commander C6 - Control intelligence

MAPLAN machines are known for their fundamental consistency, their user-friendly interface design and the versatility of their settings to configure and simplify the production process. The latest version of the intuitive touchscreen interface between user and machine boasts a 30 percent faster touch response time compared to its predecessor. With only one basic control and operation method, all MAPLAN models can be operated in the same way. The MAP.commander functions as the central unit: no matter the upgrade level - from the smallest and simplest machine to the high-end system with full automation.

Increased efficiency through individualisation

- ① Drag & drop cycle configuration for up to five parallel sequences
- ① MAP.logicmoves: Freely programmable control of external equipment
- ① Valve gated cold runner: up to 32 valve gates individually controllable
- ① MAP.motion: Self-optimising movements of the clamping unit / ejector

Secure access and data

- ① User-specific rights system
- ① Archiving of cycle configuration, process parameters and alarm protocol

Foresight instead of hindsight

- ① Diagnostic display features traffic light system and targeted operator guidance in the event of an error
- ① Alarm system with help function
- ① Maintenance program recommends maintenance activities

MAP.advanced package

Do you always use your machines to their fullest potential?

With the MAP.advanced package you can visualise your injection process in order to determine the best possible process and guarantee the highest part quality.

- ✓ Prozess graph / injection graph
- ✓ MAP.limit envelope curves

- ✓ Plasticising graphic
- ✓ Trend graphs

C6000
21" Touchscreen

Automation

Real-Time Data

Control

Monitoring

Robotics solutions

Customisation

Remote maintainance

**Process optimisation
increase in efficiency**

Hot key menu:
24 (20) freely programmable keypads
Quick access to all essential
machine functions

C600
15" Touchscreen

Be Connected

The advantages of networking and digitisation speak for themselves. Industry 4.0, which is sadly often only used as a buzzword, promises real advantages when it comes to production, planning, control and maintenance. In order to take full advantage of these benefits, MAPLAN production cells and machines can be connected to server systems to deliver production data to MES or BDE systems.

- ① Every MAPLAN machine with the new MAP.commander C6 control is network ready
- ① Authorised users can access the machine at any time and from any location via VPN connections
- ① Real-time control of production progress - or through log files and reports
- ① MAP.mes: Extensive MAPLAN interface for MES systems based on OPCuA protocol
- ① MAP.mes77: Standardised interface to industry 4.0 features provides data for MES systems: Monitoring, statistics, support, remote maintenance, etc.
- ① Integration into higher-level ERP systems, e.g. via T.I.G.
- ① Central documentation of processes and recipes
- ① Safe data connection via VPN network

Regardless of whether in the standard 15" or luxurious 21" design: both function according to a simple operating concept, which makes even the most complex processes understandable and transparent. Due to the web based HTML5 technology, the MAP.commander software can be accessed from any other device such as a laptop, iPad etc. in the user's chosen language with personalised access rights. This gives the user remote access to the machine settings and data. With appropriate configuration and access rights, the user is even able to intervene in the process remotely. There is no risk of conflict between machine operators and external access.



MAPLAN Technology

MAP.fifo | The original

The key advantages offered by the **MAP.fifo** injection unit invented by MAPLAN lie in its unparalleled performance, system accuracy and the design simplicity. The **MAP.fifo** is available in three versions: the classic **MAP.fifo**, the **MAP.fifo ergo** with easily accessible strip intake and the **MAP.fifo flex** with removable nozzle for different immersion depths into the tool.

- ① Very short nozzle with minimal pressure loss
- ① High-precision repeatability
- ① Wide processing window
- ① Very little residual material from injection to injection
- ① Easy maintenance and cleaning
- ① Particularly fast material change

MAP.cooldrive | Economical and quiet

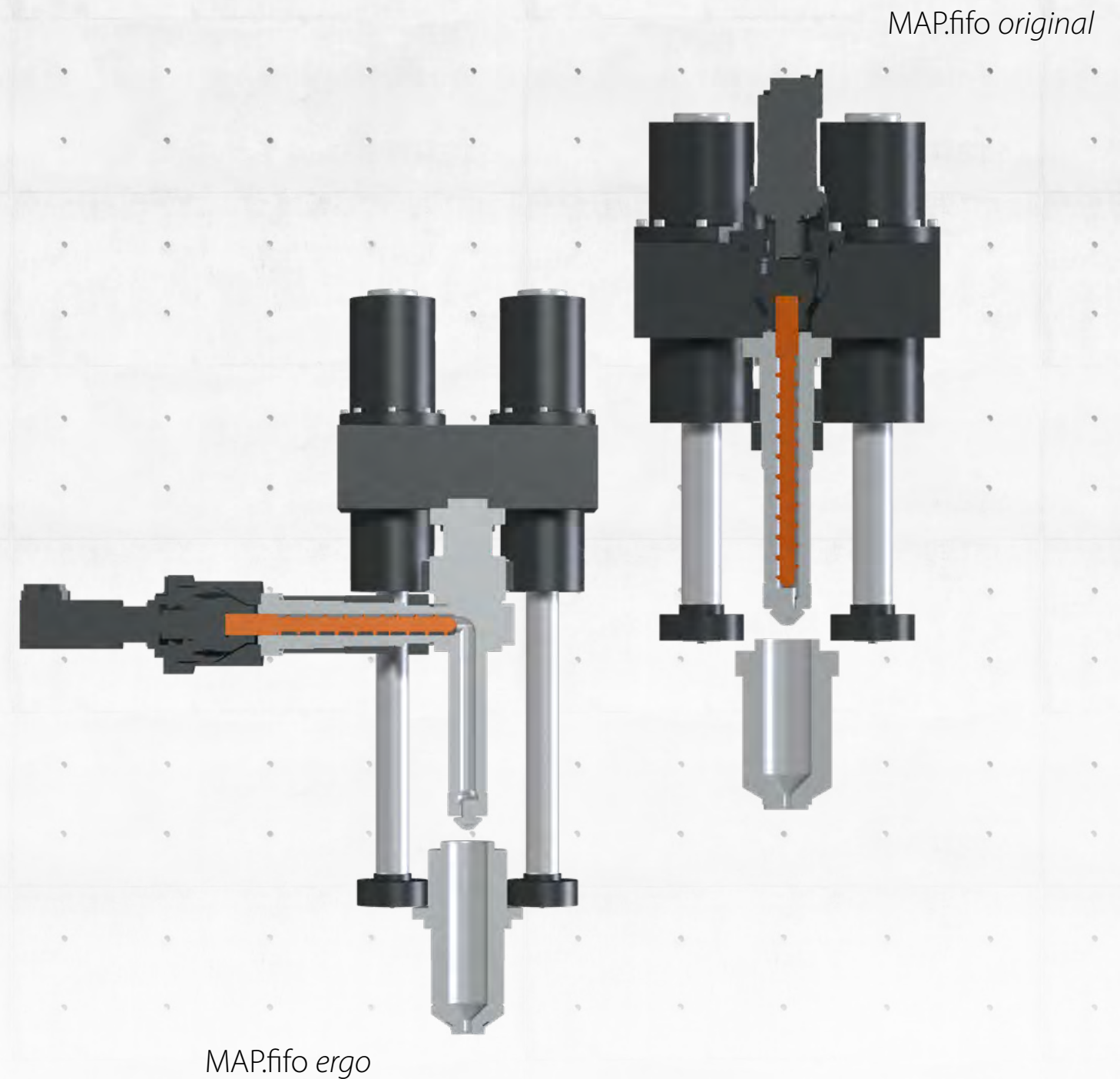
The intelligent servo-hydraulic **MAP.cooldrive** drive system automatically adjusts the engine speed during the production cycle to the current power requirement.

- ① Up to 50 percent energy savings
- ① Noise emission reduced by more than 50 percent
- ① No consumption in standby mode
- ① No external oil cooling necessary
- ① Extremely dynamic movements
- ① Low maintenance
- ① Long service life

MAP.dci | Demand Control Intelligence

MAP.dci allows for demand-oriented control of the flow rate and intelligent controlling behaviour, resulting in significantly lower power consumption than conventional temperature control units.

- ① Up to 80 percent less energy consumption
- ① Control accuracy significantly improved
- ① Drastic noise reduction



Heating plate insulation



MAP.dci



MAP.cooldrive

Higher productivity through automation

MAP.autocell – A genuine trendsetter **Flexibility** creates competitive advantage

Together with our cooperation partners, MAPLAN offers a wide range of automation solutions for process optimisation and increased efficiency during the production process. Depending on the requirements, handling systems and flexible robots are the perfect upgrade for conventional automation technology in the injection moulding industry. They enable reliable, cost-effective and more efficient production. Robots perform a variety of tasks during the production cycle:

- ① Placing inserts into mould plates
- ① Removal / demoulding of moulded articles
- ① Plate change
- ① Past-process steps
- ① and much more



MAPautocell in combination with ERGO+ 460 injection moulding machine

Turn your horizontal RAPID+ into a **fully automatic** production cell

Our robust brush systems for automatic demoulding and cleaning are among the most effective automation options for horizontal injection moulding machines. They enable the fully automatic production of all free-falling articles such as O-rings, sealing elements and moulded articles.

- ① Cost-effective automation solution
- ① Single or double brush design
- ① Up to three vertical units possible
- ① Precise demoulding processes due to rigid design
- ① Many possible configurations: Spraying and blowing devices, ejector plates or gripper systems
- ① Individual cycle configuration of movements
- ① Full integration in the MAPcommander C6 including diagnostics
- ① Fast, precise movements through servo-drives



Brush system on vertical servo-axis

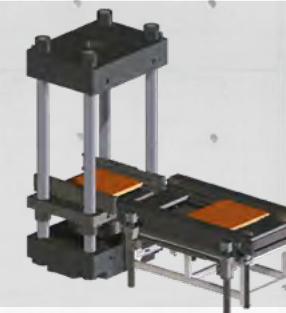
Optimise your processes

MAPLAN offers a wide range of multifunctional automation modules for process optimisation and shortened cycle times.

- ① Modular automation kit
- ① Increase the productivity and energy efficiency of your facility
- ① Fast and precise movements thanks to efficient servo-drives
- ① MAPautocell: Individual solutions for fully or semi-automatic production
- ① Centralised control system of all components with MAPcommander C6
- ① Additional components can be easily integrated into the cycle configuration
- ① Integration into the visualisation, diagnostic and alarm system



Heating plate shifting



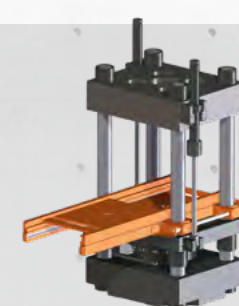
Heating plate changing

Heating plate shifting / changing

- ① Heating plate shifting enables improved ergonomics
- ① Increased output through exchanging the heating plates (two lower mould halves).



Frame shifting
1 Plate



Frame changing
2 Plates

Frame shifting / changing

- ① Cost-effective solution for centre plate exchange or shifting
- ① Manual or hydraulic



External ejector



Sprue removal device

Middle plate change

- ① Increased output using two centre plates
- ① Increased productivity through synchronised change of centre plates

Partnership right down the line

Service with intellect and insight

We at MAPLAN are known for our remarkable customer service. What sets us apart in this regard? A high level of technical know-how, years of experience, short response times and effective communication. We are there for our customers, we understand their problems and we find solutions! We see our customer-supplier relationships as partnerships.

The worldwide MAPLAN service branches across numerous European countries, the US, Mexico and China all guarantee our level of customer service through trained technicians and engineers.

- ① Hotline for immediate troubleshooting
- ① Commissioning & machine relocations
- ① Repairs & Refurbishing
- ① Maintenance and service contracts

Original MAPLAN spare parts

We keep over 90 percent of all MAPLAN original spare parts available in stock. As soon as the order is received, it is dispatched immediately, and with express delivery if requested. With high quality MAPLAN original spare parts you can trust in the availability of your machines.

MAP.easyparts: Individual 3D spare parts catalogue for every machine

- ① Quicker to the part: Simply visually search for spare parts on the computer
- ① No incorrect orders due to MAPLAN order number being visible on the selected part
- ① Simple forwarding of the order information

Preventive Packages

MAPLAN recommends the following three preventive packages to ensure a high availability of your machinery:

1. MAP.firstaid

Comes with the most important small parts that ensure smooth production and avoid unnecessary machine downtimes.

2. MAP.care

All the parts your service team needs to carry out regular maintenance.

3. MAP.care+

MAP.care package including sensors, probes, insulation boards, heating elements, etc.

MAPLAN Maintenance contracts

Do you always have an eye on your machinery? Inspections enable the early detection of potential production breakdowns and their causes. In this way, machine failure and consequential damage can be avoided. Maintenance contracts also enable better planning of service intervals, increase the availability of the machines and reduce the risk of delivery delays.

A MAPLAN maintenance contract includes the examination of the following aspects and areas:

- ① Functional check
- ① Safety devices
- ① Electric & hydraulics
- ① Plasticising and injection unit
- ① Clamping unit and ejector systems
- ① Lubrication
- ① Options, if available on the machine

Training: In-house experts

Deepen the technical knowledge of your employees to make sure you are getting the best out of your MAPLAN machines. The combination of know-how and optimisation offers real added value for practical implementation. We offer a wide range of training courses from straight forward seminars for operators and engineers to individual coaching sessions.

- ① User training – BASIC
- ① User training – ADVANCED
- ① Service & maintenance
- ① Rubber technology for injection moulders
- ① Set-up & sampling of moulds
- ① Process Optimisation - Basics
- ① Individual coaching for optimisation



Immediate help from the expert

MAP.remote maintenance

The remote diagnosis package MAP.remote offers the benefit of immediate assistance without needed on-site service engineers. This is not only practical, but also saves costs and emissions!

Web-based camera

MAP.eye

With the MAP.eye, the process or service engineer is fully aware of the current state of the machine and can access all machine parameters and provide the necessary instructions for solving the issue over the phone.

Save time and money

- ① Immediate assistance from the service or process engineer
- ① Increase machine availability
- ① No onsite engineer needed, therefore no travelling costs involved

Make it easy

- ① Access is independent of time and location
- ① MAP.eye online camera: direct video transmission for error analysis
- ① Remote configuration possible
- ① Always up to date: Updates can be installed remotely

Secure

- ① Two-factor authentication
- ① Powerful VPN network
- ① Professional data centre for fast data transfer
- ① IPsec protocols & AES 256 bit encryption

Service Hotline: +43 225 2790 9091 56 | helpdesk@maplan.at

MAP.refit From old to new

An outdated machine does not have to be replaced but can often be updated with low financial investments, making it more economical and more productive. Our team will work with you to develop the ideal package for you. You choose the scope: From the uncomplicated replacement of worn out components, new heating plate systems all the way to the entirely new construction of the machine - everything is possible.

- ① Extension of machine service life
- ① No risk: Improved machine availability
- ① Increased productivity or larger processing scope
- ① Smaller financial investment versus a new acquisition

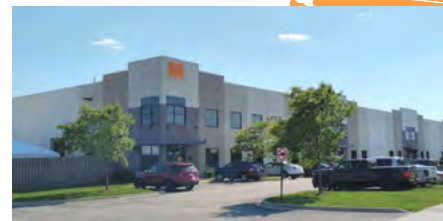
X6 controller upgrade

Would you like to integrate new processes and optimise existing ones? Upgrade now and benefit from all MAP.commander C6 functions. The X6 package boasts the full range of functions, just like the new MAPLAN models:

- ① Connectivity features & interface to Industry 4.0
- ① Real-time production data & statistics with helpful visualisations
- ① Fast cycle configuration and self-optimising motion sequences
- ① Consumption optimisation
- ① Improved diagnostics & security features



MAPLAN Worldwide



South Elgin / USA

South Elgin has been home to MAPLAN's new North American base since 2018. Machine conversions for all MAPLAN machine types are carried out at this site in order to complete the refurbishment in a competent, rapid manner. The full functional range of MAPLAN technology can be viewed during demonstrations in our own technical center.



- HEADQUARTERS
- SUBSIDIARIES
- AGENTS
- SUPPORTED THROUGH HEADQUARTERS



Chambéry / France

For more than 30 years, our team based close to Lyon oversees and supports the French market in sales and customer care. Our local spare parts warehouse and fast 24h response times complete the perfect client and after-sales service.



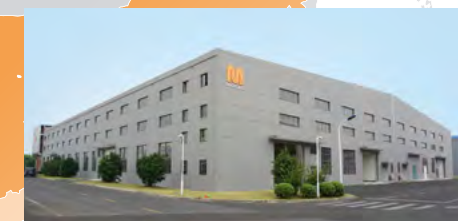
Murr / Germany

Our powerful German team collectively provides more than 200 years of experience. In one of the most important markets in the industry, our friendly and capable specialists are always available for our customers to guarantee instant support.



Headquarters / Austria

In 2016, MAPLAN invested twelve million euros in a new production facility including office buildings in the Kottingbrunn eco-plus business park. With the new plant, production was also newly structured and converted from single workstation production to lean production.



Wujin / China

In 2017, a MAPLAN production site was opened in the high-tech industrial park in Wujin. With an operational size of 4,000m², the plant has a capacity of over 200 machines each year. The location in the greater Shanghai area provides an ideal infrastructure, since numerous customers and suppliers are based there.



Malacky / Slovakia

Since 2018, MAPLAN is represented by its own plant in Malacky, Slovakia, where control cabinets are produced. The production of metal and metal sheet parts was expanded, and the assembly of components started.



- SALES
- SERVICE
- PRODUCTION

We are there for **you**

You are in good hands with our friendly and competent sales team. Our main concern is to give you the best guidance and consulting. Customers come first, as we focus on your needs:

- ① Evaluate your requirements and clarify the next steps in collaboration with you
- ① Demonstrate competence and reliability that guarantees a stress-free implementation
- ① Think innovatively and update you on the latest technical trends
- ① Co-operate with you in a respectful, friendly and precise style

Customer collaboration is well-established and first-rate with MAPLAN, demonstrated through close project coordination and flexibility to implement special customisations to project configurations.

We have established and **excellent co-operation** with MAPLAN.
The basis is close coordination as well as flexibility and will to implement special adjustments.

Dipl.-Ing. Erwin Rudolf Mach,
Managing Director, Erwin Mach Gummitechnik Gesellschaft m.b.H:

We are very satisfied. To date, we have managed to reduce the material waste by approximately 30 percent.

Antonio Da Costa, Technical &
Technical & Industrialisation Manager at SIMP, France



International expert-network

HEADQUARTERS

AUSTRIA
MAPLAN GmbH
Maplan-Straße 1
2542 Kottlingbrunn
AUSTRIA
T +43 2252 790 909
office@maplan.at

SUBSIDIARIES

CHINA
MAPLAN (changzhou) Rubber
Machinery Co; Ltd
Building 1. No.377
Wuyi Rd,Wujin Hi-Tech Zone
Jiangsu Province
CHINA
T +86 158 52 55 55 67
sales@maplan.at

FRANCE
MAPLAN
2574, avenue des Landiers
73000 Chambéry
FRANCE
T +33 4 79 96 31 02
e-mail: office@maplan.fr

GERMANY
MAPLAN Deutschland GmbH
Gottlieb-Daimler-Straße 66
71711 Murr
GERMANY
T +49 7144 89737 3
office@MAPLAN-germany.de

RUSSIA
OOO MAPLAN Rus
Molodogvardeyskaya str. 57, office 433
121351 Moscow
RUSSIA
T +7 495 640 83 88
office@maplan.ru

USA / CANADA / MEXICO
MAchinery + PLANning Inc.
1655 North Lancaster Road
South Elgin, IL 60177
USA
T +1 630 924 0100
office@MAPLAN-usa.com

AGENTS

BENELUX
T +31 30 656 04 12
info@maplan.nl

BRAZIL
T +55 11 5522 9022
comercial@geromaq.com.br

BULGARIA
T +359 32 96 93 95
info@diltech.bg

COLOMBIA
T +57 1 600 7762
luis.pinto@textilnets.com.co

CZECH REPUBLIC
T +420 606 614 505
petr.smid@smid-a-spol.cz

FINNLAND
T +46 35 155955
christian.hiljemark@battenfeld.se

GREAT BRITAIN
T +44 1452 722733
mapmanuk@aol.com

GREECE & CYPRUS
T +30 210 485 4000
panayiotis.marinis@rigas-engineering.gr

HUNGARY
T +36 1 4369095
mate@thege-plastic.hu

IRAN
T +98 21 444 55 123
M +98 912 288 0 745
tecsystempars@yahoo.de

ITALY
T +39 0363 853209
sales2@state-art.it

MALAYSIA
T +603 3291 0388
khim@rics.com.my

NORWAY
T +46 35 155955
M +46 70 5916134
christian.hiljemark@battenfeld.se

POLAND
T +48 600 722 724
info@mpawlikowski.pl

PORTUGAL
T +351 22 6051170
sales@mariocoelho.com

SPAIN
T +34 93 8655465
vramos@mariocoelho.com

SWEDEN
T +46 35 155955
christian.hiljemark@battenfeld.se

TURKEY
T +90 (312) 473 50 28
info@ergu.com.tr

VIETNAM
T +84 8 3839 9899
f.niesmann@sgn.riekermann.com

Table of content

2 - 3	Editorial
4 - 5	Success through innovative methods
6 - 7	Together, we are MAPLAN
8 - 9	Moving forward environmentally compatible
10 - 11	System solutions with a PLUS+
12 - 13	System Intelligence
14 - 15	High quality production with MAPLAN
16 - 17	Vertical, Horizontal, C-Frame or Presses?
18 - 19	Horizontal RAPID+
20 - 21	Vertical ERGO+
22 - 23	Vertical ERGOMAX+
24 - 25	Vertical CLEVER+
26 - 27	C-Frame EASY+
28 - 29	FORCE+ , BOTTOM+, MULTI+
30 - 31	MAP.commander C6 control unit
32 - 33	Be Connected
34 - 35	MAPLAN Technology
36 - 37	Higher productivity through automation
38 - 39	MAPLAN customer service
40	MAP.remote maintenance
41	MAP.refit - From old to new
42 - 43	MAPLAN worldwide
44 - 45	We are there for you
46 - 47	Contact & table of contents

© MAPLAN 2020

MEMBER OF SOULIER GROUP

The SOULIER Group is divers and a reliable partner: from the planning, implementation, and management of large real estate projects to the worldwide production of rubber injection moulding machines and modern, sustainable modular construction buildings.
www.soulier-group.at



MAPLAN GmbH
Maplan-Straße 1, A-2542 Kottingbrunn
T + 43 2252 790 909 | office@maplan.at
www.maplan.at

MEMBER OF SOULIER GROUP