



news

Edition English **10**

ORANGE GOES GREEN



MAPLAN wins Austrian
GREEN FACTORY AWARD



EDITORIAL



Dear reader!

This issue will be dedicated to all things sustainability. Our machines are stable and durable. As such it seems obvious to us that not only the results of our actions, but also our production be sustainable. Sustainability meets efficiency here at MAPLAN and runs through our business like a common thread: from the offices through production sites and storage facilities all the way to our fleet of machines. We have defined the SOCE parameter to ensure that these measures are implemented consistently. SOCE stands for security, order, cleanliness and energy. Every week, we use it to evaluate every single square meter: no one should be looking for parts at their workplace, no machine should be operating unnecessarily.

This continuously increasing level of efficiency extends along the entire process chain - from the supplier to the purchasing department to the end customer - because we believe that the efficient and sustainable use of resources is integral to both our corporate culture as well as our corporate responsibility. Rather than doggedly stick to thinking in three-year phases, we are making long-term investments by acquiring a photovoltaic system, for example.

Our commitment to energy saving was even recently rewarded with the "Green Factory 2018" award. The award shows us that we are on the right track! Another motivating factor for us is the fact that all of our employees feel at home at their place of work. For the constant improvement of every single workstation not only leads to better results, it can also be perfectly combined with environmentally friendly solutions.

We hope you enjoy reading this issue!

Ingrid Soulier

Philippe Soulier

Wolfgang Meyer

IMPRINT

OWNER
MAPLAN GmbH, MAPLAN-SträBe 1
AT-2542 Kottlingbrunn

office@maplan.at, FN: 63369s, UID: ATU19665306

EDITOR
Martina Kruber, Wolfgang Meyer, Gerald Kemper

GRAPHICS
www.soulier.at

“

Using resources efficiently and sustainably is part of our corporate culture. We want to live up to our corporate responsibility at all times in this regard. It is in our DNA to preserve our natural heritage for future generations. This also goes for continuously increasing efficiency along the entire process chain - from the supplier to the purchasing department to the end customer.

Philippe Soulier
Owner

”



Fabrik 2018

Der Wettbewerb für die beste Produktion Österreichs



We proudly present the winners: the MAPLAN management team.



Operational Excellence from the Top: Kottlingbrunn headquarters with the fire protection pond and a glass bungalow for meetings.



Electric company cars, photovoltaic cells, heating and cooling devices powered by water-to-water pump.



Maplan is putting an emphasis on **SUSTAINABILITY**

LEAN & GREEN IN ALL AREAS

Adding value takes on new dimensions as MAPLAN moves away from thinking exclusively in terms of growth and maximizing profits; instead focusing on social benefits, sustainability, a happy workforce, and social progress. As all companies that are striving to be successful at a time after growth capitalism, MAPLAN is trying to live and evolve these new values in an economy of meaning.

“We follow a holistic approach when it comes to sustainability. For our customers, these measures mean one thing above all: this ideology effects the manufacturing process of our machines. MAPLAN machines make full and complete use of all technical innovation to optimise energy efficiency”, says plant manager Oswald Steinbauer. “In addition to this, we will also manufacture them in a resource-saving manner. Resource shortages are not just a superficial topic. It is a very real issue for both our economy and society.”

MAPLAN is considered to be an industry-leading player when it comes to “Lean & Green Production” in the special machinery industry. Our “sustainability and efficiency highlights” include:

WATER ENERGY: Groundwater is used as a heat source. The water-to-water pump is heated and cooled via four wells.

SOLAR ENERGY: The sun is a nearly inexhaustible energy source with enormous performance potential.

A 200kVA photo voltaic facility on the warehouse roof supplies the site with power.

E-MOBILITY: Electric cars are becoming ever more relevant. Savings made due to cheap electricity charging and significantly reduced maintenance costs (no oil change, gearbox service, etc.) result in a financial cost advantage. And the workforce also benefits, as the operation of an electric car is associated with considerable savings due to significant tax advantages. As it stands, more than a third of the fleet consists of e-cars. Our staff even go one step further and carpool with the company’s e-cars.

SMART LIGHTNING: The entire LED lighting system uses daylight harvesting technology and motion sensors. If the employee leaves his work station, then the light is dimmed automatically just a short while later.

3D MODELLING: All systems, down to the smallest screw, are manufactured as 3D models for the shop floor. This enables an entirely paper-free manufacturing process. For the employee working in production, all information - whether it be a parts list, torque data, or Kanban storage areas details - is delivered digitally and in real-time directly to their workstation.

LEAN MANAGEMENT & PRODUCTION: The MAPLAN corporate strategy helps to streamline the production process. Man and machine are optimally matched, resulting in increased productivity and performance. The solutions range from one-click ordering to automatic price calculations to precise delivery instructions, which allow the supplier to bring the parts directly to the assembly station. Just-in-time deliveries and just-in-sequence material supplies keep

Using resources efficiently and sustainably is part of MAPLAN’s corporate culture. It is in the DNA of our business to preserve our natural heritage for **FUTURE GENERATIONS.**

inventories low and have a positive effect on assembly times. The company has even created its own reusable containers in order to make the processes even leaner and produce less waste.

The trend towards more ecological processes is growing into one of the most powerful driving forces of our time, made possible by technological innovations. It is not only sparking a realignment of the values of a global society, culture and politics, but it is changing entrepreneurial thinking and influencing decisions at a root level. MAPLAN sees itself as a pioneer in this field and is particularly proud that the “Lean & Green” program has led to MAPLAN being announced as the “Green Factory 2018” category winner in November, proving that the initiatives for increased sustainability and efficiency are gaining traction. In addition, MAPLAN was proud to have been awarded 2nd place in the overall ranking of the FABRIK 2018 competition.





Martin Drochelmann at his workplace.

GFT MAKE WAY FOR A SUCCESSFUL PARTNERSHIP

A **GERMAN MANUFACTURER** of precision rubber moulded parts which loves hunting and **FOCUSES ON SUSTAINABILITY**

Niedersachswerfen. This town is home to a family-run business, like those more associated with times now passed. Martin Drochelmann, the father, runs the company with his two sons Yanek and Jonas. Numbering a total of 30 employees, the quality of a handshake is still paramount here. The brick buildings and signs are reminiscent of the GDR era, when parts for vacuum cleaners were produced by Vorwerk. There are even tools which date back to the 60s that are still being used today. Small production numbers are this company's greatest strength, and the business prospers in many areas.

For the IM, CM and TM processes, GFT chooses MAPLAN machinery. The company uses the equipment for various production processes. Two to three change-overs a day are on the agenda. Flexibility is Drochelmann's foundation for success. GFT is a niche supplier: Rubber-metal compounds, where the metal part is coated and encapsulated with rubber, as well as the processing of sophisticated materials are integral to everyday production.

“ The MAPLAN FIFO injection unit really comes into its own during our constant material changes. Green at 8am, red at 11am, brown at 1pm and white at 5pm - simply amazing. Just so easy to clean and - off you go. ”

Martin Drochelmann



Collection of products in various colors

BELOW YOU WILL FIND A FEW EXAMPLES FROM THE HUNTING RANGE WHICH IS PRODUCED IN-HOUSE:

A VARIETY OF RECOIL PADS FOR HUNTING RIFLES.

A novice would be amazed at the sheer number and variety of different designs. The hunter can choose the recoil pad that best ergonomically fits his shoulder. The base of a pad is pressed using hard rubber. Together with a stainless steel plate, this pad is then coated with a soft rubber.

PISTOL GRIP CAPS

are also pressed using hard rubber (90 Shore D). The advantage of this material is the fact that it is easy to process for the master gunsmith. The special rubber can be oiled and polished till it shines.

THE RUBBER MUZZLE GUARD

is a complex part which prevents water from running into the muzzle when it rains.

FLIP-OFF CAPS,

which are attached to the lens of the rifle scope as a light shield, act as a dust protector and optimize the light exposure.

DEER CALLS

that sound just like the call of a stag. This is a rubber object that looks a little like a bellows. The hunter uses it to simulate the stag's call to attract rivals. The deer call comes with a CD by the way (!).

Drochelmann is also particularly proud to produce the majority of its manufactured products in an energy-efficient and environmentally friendly way. Their MAPLAN machines tick all the boxes and then some.

One of Drochelmann's greatest passions is hunting, which has since become a profession. He spends his free time in his hunting territory, where he regulates the wildlife population, takes care of the forest, or fights the plague of wild boars, which has become a problem in large cities - but always with respect for the creature and the environment. Half of the company's range is hunting products and they supply the whole of Europe, at times also the USA, with hunting essentials. As wholesalers are becoming few and far between and no longer offer all products, the family has decided to set up its own impromptu internet shop for direct sales to the end consumer. As such, their son, Jonas, has set up Hunterfox.de. In this way the small company is also reacting to the changing times.



The sons also already work for the company.

“ Our machines have the whole package. The COOLDRIVE® system is economical and quiet - it ensures a comfortable noise level during manufacturing. Furthermore, the machines do not have to be cooled. So we even save twice as much electricity. ”

Martin Drochelmann

ALL THESE FEATURES (SEE BOX BELOW) JUST GO TO SHOW THAT DROCHELMANN'S DECISION TO CHOOSE MAPLAN AS A PARTNER WAS THE RIGHT ONE.

It becomes abundantly clear that Drochelmann's company is extremely innovative when one learns of his "Wildwarner". Since 2018, the electronic device has been installed on roads to prevent game from crossing the road. It was possible to reduce wildlife accidents by up to 90% (!) in test installations with this device. Sensors detect the rolling noise of the approaching vehicle and emit an acoustic and visual signal that stops the game. The device transmits the information to the next Wildwarner and thus creates a safe tunnel for the vehicle to pass through. Simple and yet ingenious - and already in use from Austria to Scandinavia.



The recoil pad: A composite part made of hard rubber, stainless steel and soft rubber.



The inventor together with a mounted "Wildwarner".

THIS IS WHY MAPLAN TECHNOLOGY IS SUSTAINABLE

→ **FIFO INJECTION UNIT:** the ingeniously simple design with the particularly short machine nozzle ensures minimum pressure losses during injection and contributes to an excellent energy balance. Compound changes can be carried out extremely quickly and save material - MAPLAN also understands sustainability means the avoidance of expensive material waste.

→ **SERVO-HYDRAULIC COOLDRIVE® SYSTEM:** no energy consumption when in standby, optimised power consumption when in use, generally no additional oil cooling necessary (no cooling water) - this results in potential energy savings of up to 50%.

→ **DCI® TECHNOLOGY FOR TEMPERATURE CONTROL UNITS:** demand-oriented control of the flow rate and intelligent control ensure significantly lower power consumption than with conventional temperature control units - resulting in energy savings of up to 20%.

→ **ROBUST LATERAL INSULATION OF THE HEATING PLATES:** Energy efficiency and very good temperature distribution set this product apart.



160 t and 320 t MAPLAN machines in use at GFT.



SIMP - inventors and experts developing and manufacturing plastic and rubber parts with **MICRO INJECTION** for the cosmetics and industrial sectors

PRECISION PARTS FOR BEAUTY - SUSTAINABLY PRODUCED IN FRANCE



Vive la beauté! For more than 30 years, MAPLAN has supported the efforts of this leading manufacturer of high-precision technical parts for packaging and make-up. SIMP from Tigery, France is equipped with 18 rubber injection moulding machines between 35 and 300t, mainly for the production of small wiper parts for gloss applicators. The rubber applicator enables better application of make-up and offers better compatibility with cosmetic formulas compared to competing products using other technologies.

SIMP and MAPLAN teamed up with a mould maker with the aim of reducing rubber waste to a minimum in order to manufacture the parts in a particularly **ENVIRONMENTALLY FRIENDLY WAY.**

“ To date, we have managed to reduce waste by approx. 30%.

Antonio Da Costa
Technical & Industrialization Manager
at SIMP

”

In addition, MAPLAN and SIMP will be working closely on **FUTURE JOINT PROJECTS:** integrating MAPLAN's efficient and advanced machines into SIMP's

manufacturing requirements. Production costs of the rubber injection moulding technology, which has been specifically made for SIMP, are to be further reduced. The aim is to save resources and reduce costs on all fronts.

WE HAVE ALREADY ACHIEVED THE FOLLOWING TOGETHER: In the last 15 years, 2 billion rubber applicators have been produced using MAPLAN machines and sold on the global cosmetics market.

Special requirements of SIMP - implemented by MAPLAN for MHF 300 t

- Intelligent and automated separation of product and sprue in the machine area
- Waste strategy of <0.001 (max. 1 bad part in 1000 pieces). More than 160 parts are produced at the same time per production cycle, depending on the tool design.
- Special covers for the demoulding brush have been developed and installed in order to maintain machine cleanliness.
- Production cell for fully automatic production of parts



NEW MAPLAN PLANT IN MALACKY BRINGS MORE FLEXIBILITY

Austrian know-how coupled with SLOVAKIAN PRODUCTIVITY

Malacky, a town in the westernmost part of Slovakia - a neighbouring country of Austria. MAPLAN s.r.o. was founded here in 2016 due to its strategic location. Not long afterwards, in May 2018, the company moved from the rented site to its own 1700 m² factory. The production of switch cabinets and hydraulic components with 10 employees at the beginning has gone from strength to strength ever since. Currently, component pre-assembly is carried out in Slovakia. But the first machines for metal and sheet metal processing are already being installed and production has now also begun. A portion of the demand is produced in-house and the plant in Kottlingbrunn is supplied with parts for assembling the machines.

All these decisions are based on the following thought process: MAPLAN's flexibility is to grow and the availability of parts is to be increased in

order to guarantee security of supply. In addition, MAPLAN will continue to expand its expertise in specialist areas within the organisation. In some areas, supplier autonomy is also to be reduced. Ultimately, this also benefits the customer. The aim is to deliver the machines even faster and in even better quality.

MAPLAN is set to invest about 2 Mio€ in Malacky in the next 2 years to increase the turnover to about 9 Mio€. 20 employees are already based in Slovakia and this figure is to be increased to over 50 by 2021. The 30.000 square meter site already houses a 3.500 square meter factory building and a 400 square meter office building. The location near Bratislava and Vienna offers the perfect network and infrastructure. The site also offers good potential for expansion.

"It's no longer enough to build good machines. If you want to be successful on the global market, you have to perfect production, reduce costs, and be represented in branches across the world. Both customers and employees benefit from this strategy because they can rely on us to continue to guarantee innovation and jobs through growth and expansion.", says Wolfgang Meyer, MAPLAN-Managing Director.



THE SOULIER GROUP IS THE UMBRELLA COMPANY OF NUMEROUS SUCCESSFUL BUSINESSES

SOULIER GROUP

Businesses of the SOULIER Group have one thing in common: Economic success is achieved through **BUSINESS OWNER MANAGEMENT** that thinks outside the box and represents values that extend beyond the immediate future.

The SOULIER Group is **DIVERSE, ACTIVE, AND FINANCIALLY STRONG**. It is a reliable partner: from the planning, implementation, and management of large real estate projects to the worldwide production of rubber injection moulding machines and modern, sustainable modular construction. Therefore, we established the **SOULIER HOLDING** which will handle the operative group activities in the future.

REAL ESTATE



Property developers for high-grade real estate



Construction project management and local construction supervision



Property and asset management



THE REAL ESTATE PORTFOLIO encompasses several properties. Such as the most recent major construction project RESIDENZ ADELE at Vienna Central Station, which has received investments of around 75 million euros to build 284 apartments.

INDUSTRY



"The clever way to build"



Rubber Injection Intelligence





An official ribbon cutting ceremony takes place at the opening of the new MAPLAN plant in Illinois. From the left: Owner Philippe Soulier; Vice President Sales John Mohl Sr.; CEO Wolfgang Meyer; owner Ingrid Soulier and President North America Deven Lokagariwar.

US DAYS OF TECHNOLOGY

SETTING THE COURSE FOR THE FUTURE

NEW SITE IN ILLINOIS

SOUTH ELGIN. Around 100 people took part in the 3-day MAPLAN Days of Technology event in June 2018. Simultaneously, the new MAPLAN plant in South Elgin was officially opened. The new facility is around 40% larger than the previous site and ticks many of MAPLAN's boxes, such as the possibility to showcase the functions of MAPLAN machines to potential customers in the new pilot plant. "In recent months, MAPLAN has gained many new customers in North America. Half of them are new to injection moulding," said John Mohl Senior, Vice President Sales.

The new location also offers the opportunity to carry out machine conversions - for both C-frames and large vertical machines. "Above all, the new plant means more flexibility for us. It offers enough space, work surface area, and ceiling height," said Mohl. With the new MAPLAN site, the branch would like to show the industry that refurbishing is a real possibility. "Customers for whom we have already refurbished machines are delighted. Follow-up orders come in all the time," Mohl says happily.

INDUSTRY TRENDS

The new plant also serves as a warehouse for injection moulding machines: whether fully assembled or still wrapped. Both versions are ready to be shipped throughout the USA. MAPLAN is aiming to provide the optimal solution for current and future customer requirements. That is why MAPLAN has gone to great lengths to understand the current trends in the

“ We try to provide the best product for the current and future requirements of the elastomer injection moulding market. ”

John Mohl Sr.
Vice President Sales

industry. Historically, the 250 ton machine assembly has been the standard size used for injection moulding in the US. Recently, however, the trend has shifted towards a 320 ton assembly. Similarly, the 400t machines have long been the "bread & butter" of North America - for more than 25 years. Here, too, the trend is heading upward in order to best use smaller work spaces. MAPLAN is stocking up on the 320t and 460t series to stay one step ahead of the competition.

TRAINING AND EDUCATION TAKES CENTER STAGE DURING THE DAYS OF TECHNOLOGY

Many visitors came to the new location within the scope of the Days of Technology. The event impressed guests with an extensive range of presentations and technical trainings. Topics such as the integration of data capture software, the use of simulation software or ways to increase efficiency were only some of the

many highlights of the program. And the success of the event speaks for itself: the visitors came in from Canada, Mexico and all over the United States. "This shows that MAPLAN knows what the industry in North America needs: training! People want to understand processes, equipment, Industry 4.0 and how it all fits together - not to mention how to make full use of their machines," said Technical Sales Director Ben Puffer.

MAPLAN has set itself the goal of organizing the US Days of Technology every two years.



DEVEN LOKAGARIWAR - THE NEW PRESIDENT OF MAPLAN NORTH AMERICA



Former President Pat Hook, who had worked for the company for many years, retired last year.

DEVEN LOKAGARIWAR took over his position last July.

Deven has been working with MAPLAN since 2016 and helped to plan the set up of a site in Changzhou, China. Before joining MAPLAN, he worked for DESMA for almost 20 years. Following the opening of the MAPLAN plant in Changzhou, his next challenge was to head to the USA in view of Hook's imminent departure. "Deven is a great asset to MAPLAN. He has a very business-oriented attitude and knows exactly how production must run and can be optimised. He knows the process, not just the machines," says MAPLAN CEO Wolfgang Meyer.

WHAT CAN CUSTOMERS EXPECT?

One of the reasons why Lokagariwar worked so closely and extensively with Hook last year was so he could understand the customer relationships. It was incredibly important to him to learn what the customer cares about and why. "I want to get to know every customer in America personally and learn more about their history," says Lokagariwar. "Know-how can be transferred easily. The KNOW-WHY, on the other hand, is what is actually important - and far more difficult to grasp."

Deven will operate from South Elgin and manage activities in Central America and South America. Over the last two years, MAPLAN has expanded sales and service in Mexico. The company sees America as a unit. "We will view America as a whole and ensure that our customers, no matter where they are on the continent, receive the same attention and guaranteed high quality of service," explains Deven.

“ The team is the key to success. Buildings, investments and ROI, technology and software - our focus, as ever, is always on individual. We have the right people with the experience we need. As it happens, now is also the right time to make the most of these resources. ”

Deven Lokagariwar
President North America

THE NEW AFTER-SALES TEAM

JESSICA LOUZENSKY - OPERATIONS MANAGER

With years of experience in customer support in a similar business area, Jessica supports the Service and Spare Parts team. With her winning character, she will certainly inspire customer satisfaction moving forward.

JOHN CALLANAN - FIELD SERVICE ENGINEER

As an experienced service technician in the dynamic field of plastics and rubber manufacturing, John strengthens our service team to further shorten our response times and provide the best possible customer service.

RODRIGO NAVARRO - FIELD SERVICE ENGINEER

Our newest team member is responsible for our customers in Texas and the surrounding area. Rodrigo has extensive experience in the maintenance and installation of equipment ranging from helicopters to wind turbines.



X6 – HEADING INTO THE AGE OF INDUSTRY 4.0 WITH A NEW CONTROL UNIT



FREUDENBERG Sealing Technologies remains competitive with a high degree of automation

Do you remember those days? Now referred to as the radial shaft seal, the “Simmerring®” was invented in 1936 by Walther Simmer at the Carl Freudenberg tannery in Weinheim. After the 2nd World War, he returned to his native Tyrol and founded the Simmerwerke in an old mill in Kufstein. Before Carl Freudenberg took over Weinheim in 1985, millions of Simmerrings® were produced there. Today, it is home to a high-tech company, and those memories merely adorn the walls. Freudenberg sealing technologies is part of the Freudenberg Group with more than 440 companies in 60 countries around the world.

MAPLAN has been a **PARTNER** of Freudenberg Sealing Technologies **FOR ALMOST 20 YEARS**. Freudenberg is one of MAPLAN’s largest Austrian customers with approx. 65 machines ranging from 50-160t processing over 200 different elastomers. The company sees itself as an optimal collaborative partner with shared values, such as a long-term vision, high expectations of its team and products, and a focus on the safety of the employees. What is more, as global players it is important for both companies to place an emphasis on local presence and to contribute to sustainability.

In Kufstein, elastomer composite parts and precision moulded parts for dozens of well-known customers from the automotive, railway, fluid handling and building engineering sectors are manufactured using CM, RM and IM processes. And these customers are perfectionists. Fast delivery times and perfect quality are

“ The customer expects the highest quality at the lowest possible price. This is why we prioritise the automation and optimization of every production process, even for machines that have been in service for a long time

Martin Gugglberger,
Electrical Maintenance Manager

demanded and put the production to the test every day. Therefore, the applied standard technology must be up-to-date.

What does Freudenberg Kufstein particularly appreciate about the X6?

→ TROUBLESHOOTING DIAGNOSTICS.

The operator sees why a movement of the machine isn’t working and is provided with instructions on how to resolve the issue. This makes troubleshooting easy and avoids mistakes.

→ PROCESS PARAMETERS.

The process parameters are perfectly visualized and stored with trend graphs and offer more possibilities for adjustments compared to the C4.

→ ENVELOPE CURVES.

With envelope curve monitoring, it is possible to visualize speed, pressure, and injection performance across the entire injection process.

→ INTUITIVE USER EXPERIENCE .

The menu design is structured clearly, and MAPLAN’s intuitive operating standards have been maintained throughout. The design of the touch screen appeals to younger generations in particular

→ CONFIGURABILITY.

The selector switches can be individually assigned to cycle actions and thus perfectly adapted to the cycle sequence. The combination of touch screen AND keys is particularly efficient.

→ SIGN-IN FUNCTION.

As every employee logs in contactless via an RFID chip, the employee’s actions can be traced at any time.

→ AUTOMATIC RAMP.

In order to optimise processes, braking point, acceleration, and deceleration are automatically calculated and set for each cycle based on the tool. This guarantees the fastest possible movement with soft-closing tools.

→ HEATING CURRENT MONITORING.

This optional control function indicates defective heating elements, contributing to part quality maintenance. It ensures that the temperature distribution is uniform and all parts are completely vulcanised.

→ SMART LIGHT.

The new Smart Light visualizes the current vulcanisation time. This is very beneficial to the operator when operating multiple machines.

CONTROL C4 BECOMES X6

At the beginning of the year, Freudenberg Sealing Technologies Kufstein began replacing older C4 Control Units with the new MAPLAN X6 control generation. The basic mechanics and electrics of the machines are still so good that they have decided to simply refurbish them. In addition to a larger range of spare parts, the main reason for switching to X6 was the option to transfer data within a network from the machine via OPC UA to the existing MES system. Seven core process parameters have been defined for this purpose, which can now be accessed in the system at any time. This avoids the issue of handling Big Data and focuses on the essential information of the production process.

“We want to give our customers the best possible service. If necessary, all production data of a certain batch can be retrieved afterwards and made available to the customer,” says Maintenance Manager Werner Widauer. In addition, the production manager always knows how everything is going. In the future, any machine shortages or machine downtimes will be immediately visible on a dashboard and can be processed according to priority. If required, the production manager can also connect to the new X6 machine controller remotely - without affecting the production process.



“Our goal is to collect data to achieve long-term optimisation. We want to reduce heating times, increase quantities, and optimise processes. Our space in Kufstein is limited, and we plan to remain competitive with fully automated small cell production. There is always room for optimisation, but you need state-of-the-art technology to make it happen,” says Widauer.

Because production stands and falls by the quality awareness of the employees, Kufstein introduced TPM - Total Productive Maintenance. The machine operators receive safety instructions and are trained to both clean the equipment and carry out minor service activities

SERVICE WITHOUT BOUNDARIES

As a family-run mechanical engineering company, we at MAPLAN value our partnership-based service structure. As only close collaboration makes it possible to learn of, understand, and solve the specific challenges of our customers together. With extremely short reaction times and excellent contact ability, we are able to support reliable production processes and contribute to the success of our customers.

TRIED AND TESTED MACHINES DON'T HAVE TO BE WRITTEN OFF

Nothing throws a wrench into a smooth production process more than unscheduled machine downtime. Our service technicians examine the machinery and create a plan of action. Refurbishing makes it possible to cost-effectively extend the service life of the machine by many years. The

such as lubrication, etc. This allows the maintenance staff to focus on pressing issues while working effectively. “It took some time to convince the employees, but now the greater sense of responsibility has also increased motivation. And the server-friendliness of the MAPLAN technology is supported by our TPM program. Luckily, we have been using MAPLAN since the beginning - we know how to use it,” Gugglbauer says with a wink at the end of our interview.

extent of the refurbishing is determined by the customer: from the uncomplicated replacement of worn components, new heating plate systems, all the way to the entirely new construction of the machine - everything is possible.

MAKE THE CHANGE TO X6 NOW

For machines with C4 control unit, MAPLAN offers upgrades to the new C600.web control unit. This “X6 package” offers the full range of functions of all new MAPLAN machines:

- Self-optimising movements
- MAP.remote – secure remote access for progress control and process optimisation
- The easiest cycle configuration
- Upgrading of safety technology and electrics to the latest state of the art

Aside from this, we also offer various spare parts packages to help you remain as flexible as possible when it comes to regular machine maintenance. Three different package sizes guarantee maximum freedom of choice. Just enquire now.



Maintenance Manager Werner Widauer at the MAPLAN X6 control unit.

THE PATH TO ENERGY EFFICIENCY

Hunt down resource guzzlers and purposefully save resources through energy monitoring

Many companies are often unaware when energy is being used inefficiently. Precise knowledge of energy flows and visualising consumption can provide a basis from which appropriate countermeasures can be taken, thereby reducing costs.

With **MAP.ENERGYWATCHER**, it is possible to continually record the consumption of operating resources of an injection moulding machine. Consumption is recorded in its minutiae, allowing for calculations and optimising of plans. Ideally, it also leads to tangible financial savings. All changes to the production process (e.g. regarding temperatures or speeds) have an influence on energy consumption. This change is then reflected on the energy trend display of the new generation 6 machine controller. This information

allows direct conclusions to be drawn as to whether the changes have led to an improvement in energy consumption.

In the future, MAP.EnergyWatcher will also enable the process engineer to calculate the energy input of each individual part more precisely: an enormous advantage when calculating new and item-related parts, as these calculations are based on real data.

The MAP.EnergyWatcher is available in

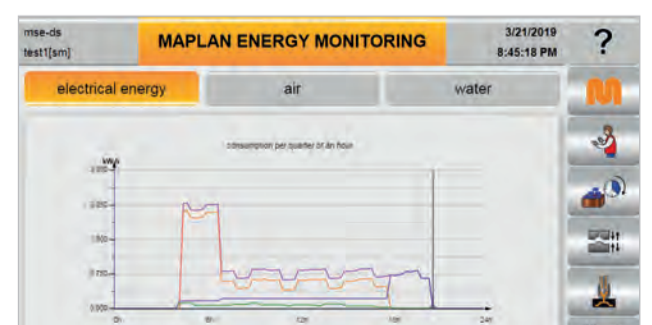
THREE VERSIONS:

- For water measurements: **MAP.WATERWATCHER**
- For air pressure measurements: **MAP.AIRWATCHER**
- For power measurements: **MAP.POWERWATCHER**

Every package comes with the relevant hardware and software. The supplied sensors record the necessary data for monitoring. All collated data is transferred to the control software and can be forwarded to other systems in the processing chain by using the standard export function of the C6.x controller. This gives way to a plethora of opportunities for analysis:

- Energy per shift, day, or definable period (which can be compared to the trip meter)
- Energy consumption for the currently produced product

In the future, energy monitoring could generally become even more important. In some countries, subsidies for energy-saving measures and energy-efficient machines are being considered. Others are even considering requesting proof of resource consumption moving forward.



WHAT DOES “SUSTAINABLE” ACTUALLY MEAN?

Three examples of **SOCIAL SUSTAINABILITY**

The dictionary defines sustainability quite briefly: “Principle according to which no more may be consumed than can be regrown, regenerated, or made available again in the future.” This means, for example, that in the forest only as much wood can be harvested as can be grown back. Thus, many people’s thoughts now turn first and foremost to climate change and green electricity when they hear the word sustainability. For a long time, the topic of sustainability was considered “one-dimensionally”: The environment and the impact our actions had on our surroundings were at the forefront of all discussions and demands. Sustainable development can only take place if **ECOLOGICAL, ECONOMIC, AND SOCIAL ASPECTS** are considered. Unfortunately, the social aspects of sustainability are still underestimated in many companies. People are increasingly confronted with the growing complexity of internal and external processes and continue to hold on to the idea that employees can still be motivated to solve these challenges with control and power. And yet, what is needed are organisations and employees that are adaptable, flexible, perceptive, and intelligent. This makes it even more important for MAPLAN to offer its employees an environment that enables pleasant and successful collaboration. Only good teamwork ensures mutual success. As such, the following topics are of particular importance to us:



1 TOGETHERNESS - THE COMBINED POWER OF THE GENERATIONS:

Some provide knowledge such as life and work experience. Others need something – for example, help with new tasks. The resources of the older generations complement the agility and diversity of perspectives of the younger generation. MAPLAN tries to align the needs of present and future generations. Empathy and sensitivity towards the needs of different generations, whilst maintaining an openness and appreciation of their differences, is imperative to MAPLAN.

2 FAIRNESS - FAIR ACTION AND MOTIVATION:

Research and studies show that employees become more productive and perform better through a sense of appreciation and fairness. When employees receive a fair wage, this not only increases motivation, it is also sustainable. Similarly, respectful communication in daily interactions influences work performance. Good working conditions and positive emotions are inspirational.

3 OPENNESS - BREAKING DOWN BARRIERS:

Breaking down of barriers often means making places accessible to everyone, even if they use a wheelchair. But it means so much more than that. It is important for MAPLAN to address issues such as immigration and diversity openly and actively. Because diversity makes life and the workplace more multi-faceted and interesting, increases creativity and promotes innovation. And only those who live with solidarity and a sense of international responsibility contribute to making a society worth living in and fit for the future.

MAPLAN is proud of its team. The employees themselves assume more responsibility and significantly increase the efficiency of the company. And this also has an impact on our customers, partners and suppliers.



MAPLAN ON TOUR



Dusseldorf – we come!

At MAPLAN, preparations for the largest industry trade fair of the year are in full swing. On almost 300 m² stand area on our booth 16D40 in hall 16, we focus this year on products and services. In the center of attention:

- **HORIZONTAL AND VERTICAL INJECTION MOLDING MACHINES**
- **CUSTOMER CARE OFFERING**
- **NEW MACHINE CONTROL UNIT C6 INCL. MAP.REMOTE LIVE DEMONSTRATION**

Our technical experts will be right at your side with valuable advice and support. “It is important to inspire the visitors and engage all senses. Like on all MAPLAN events, all customers are guests and warmly welcome!” says Marketing Director Martina Kruber. As always, we will take care of the customer’s well-being and look forward to welcoming them to our stand party on Thursday, 16 October 2019.

EVENTS

Save the Dates

2019

